

**ROPING REEDS OF  
TRUST LOYALTY**



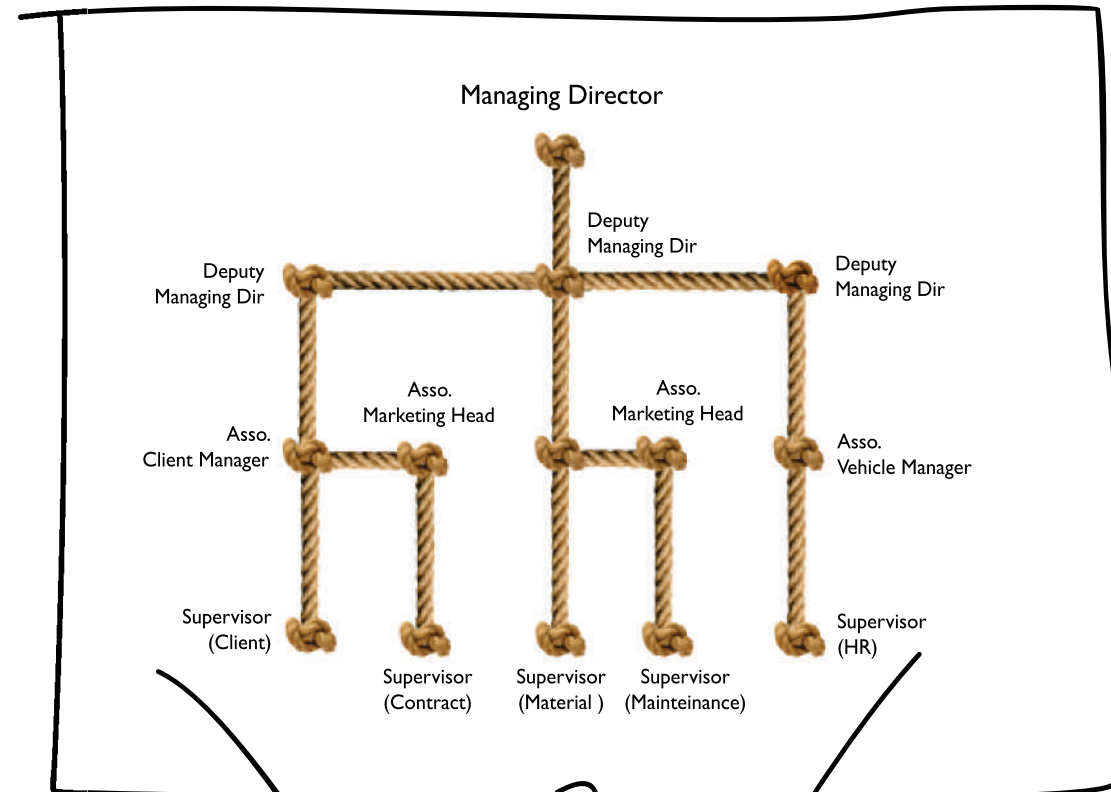
**Office Address :** Plot no.k/R6, Phase II Chakan MIDC  
Khalumbre, Taluka- Khed, Pune- 410 501  
Mob. + 91 9881507171 / +91 9657247171  
Email : shreevighnaharta7171@gmail.com



**SHREE  
VIGHNAHARTA  
TRANSPORT**



## Strengthening the ropes of scrutiny



### Dispatch

A separate team handles dispatch matters, therefore least confusion and more efficiency is achieved.

### Tracking Management

No package or tender has been misplaced as the in-house tracking system is made full-proof that attends to every client's necessary knowledge of the package.

### Loading & Unloading

A separate team of professionals is maintained for loading and unloading so there is no issue of hectic deliverance or mishandled delivery.

### Material Management

Careful periodic inspection of vehicles, replacement of faulty parts, constant check on drivers and vehicles.

We believe in the stern particular discipline that holds the organization with a healthy scrutinized structure and indents the careful task management. Indeed managing a national business that offers every minor thought in the business is not an easy job. But, with like-mindedness and brilliant management planning, We have become an ace tycoon for strengthening these skills. Individual handling of different departments with responsible personnel at every post check makes the working even more efficient.

- **Scrutinized Structure**
- **Careful Task Management.**
- **Brilliant Management Planning**
- **Ace tycoon**
- **Diffirent Departments**
- **Working Efficiently**







- Hard work
- Prudent
- Super Qualified
- Apex Position
- Challenges
- Opportunities

Hard work and prudent planning has led us to being the super qualified and in the apex position. Although it has not been the sprint running we have withheld all the challenges and stuck through the heavy opportunities that became our assets. Ultimately being as the No. 1 makes the victory more strengthening and more fastening. As rightly said the stigma of winning is what makes Legends. Although we politely decline as legends we do aim for it in future.

### Our Bull's Eye

Continue acknowledging the loyalty threads as our company heirloom and realize our contribution in national economics.

### The Milestone at Finishing Line

Provide quality service and become a prompt partner of a complete cost effective solution.







Wheeling the Tough Whirls



## Knotting a watchful bargain



Time departs money. A meager delay can cost us many things. So when thinking about time consciousness we understand the significance of our clients' time. Having a faithful promise and commitment for the deliverables is our age-old practice which we plan on continuing with utter prominence and regularity. Keeping a constant check on the dispatch en-route, handling multiple queries calmly, etc. adds to the commitment relationship we share with our clients.

- Time Consciousness
- Significance of our Clients
- Faithful Promise
- Commitment for the Deliverables
- Dispatch en-route
- Commitment Relationship

### Delivery Scheduling

Book-keeping the delivery schedule is the major role that has been played since the start. Soundly categorizing the packages by destination of dispatch, internal material of the package, client priorities, client preferences etc. makes the delivery and the transport hassle-free and efficient.

### Client Servicing

As the time evolves, preferences of the customers change and demands become special. We recognize the need to move beyond incremental change and pursue ways to integrate new service models that appeal to a more varied consumer base, target the right sets of customers to produce value-based service experiences.







- **Appropriate Quality**
- **Delivering Quality Service**
- **Assurance and Trust**
- **Focused Quality**
- **Loyal and Trustworthy Services**
- **Driver Management**

### **Quality Analysis**

Straining deliberate efforts for maintaining and focusing on quality to deliver loyal and trustworthy services for our clients.

### **Human Resourcing**

Maintaining individual departments and special skilled personnel of every task force handled in the transport industry. May it be driver management, may it be supervising staff or may it be organizing special prevention tutorials organized for skilled staff.

Implementing appropriate quality maintenance servicing is other main affirmations that have been enhanced time and again. We at Jopadevi do not merely deliver service, but we believe in delivering quality service which in turn ascertains assurance and trust for our clients.



Looping  
Standardized Caliber







SHREE  
VIGHNAHARTA  
TRANSPORT

॥ श्री जीवदेवी प्रसन्न ॥

॥ विघ्नहर्ता ॥

॥ जगद्गुरु ॥

SHREE VIGHNAHARTA SERVICES

MH-14HG  
7558

23550

TATA



## Stringing Empowered Staff & Big Wheels



A company does not just maintain work culture by its infrastructure; or, by its resources alone. Graciously saluting its staff and empowering them with essential training facilities like supervisor's training, accident prevention workshops, driver's training, disciplined dress code evaluate our proficiency.

Driving force and durability of our vehicles is the key feature. Therefore, initiating strong and responsive maintenance of our vehicles makes us being in the top league. Extra care is taken and a regularized inspection of each vehicle is achieved periodically. Clean and efficient vehicles derive quality service.

- **Durability of Vehicles**
- **Strong and Responsive Maintenance**
- **Regularized Inspection**
- **Efficient Vehicles**
- **Work Culture**
- **Accident Prevention Workshops**
- **Disciplined Dress-code**







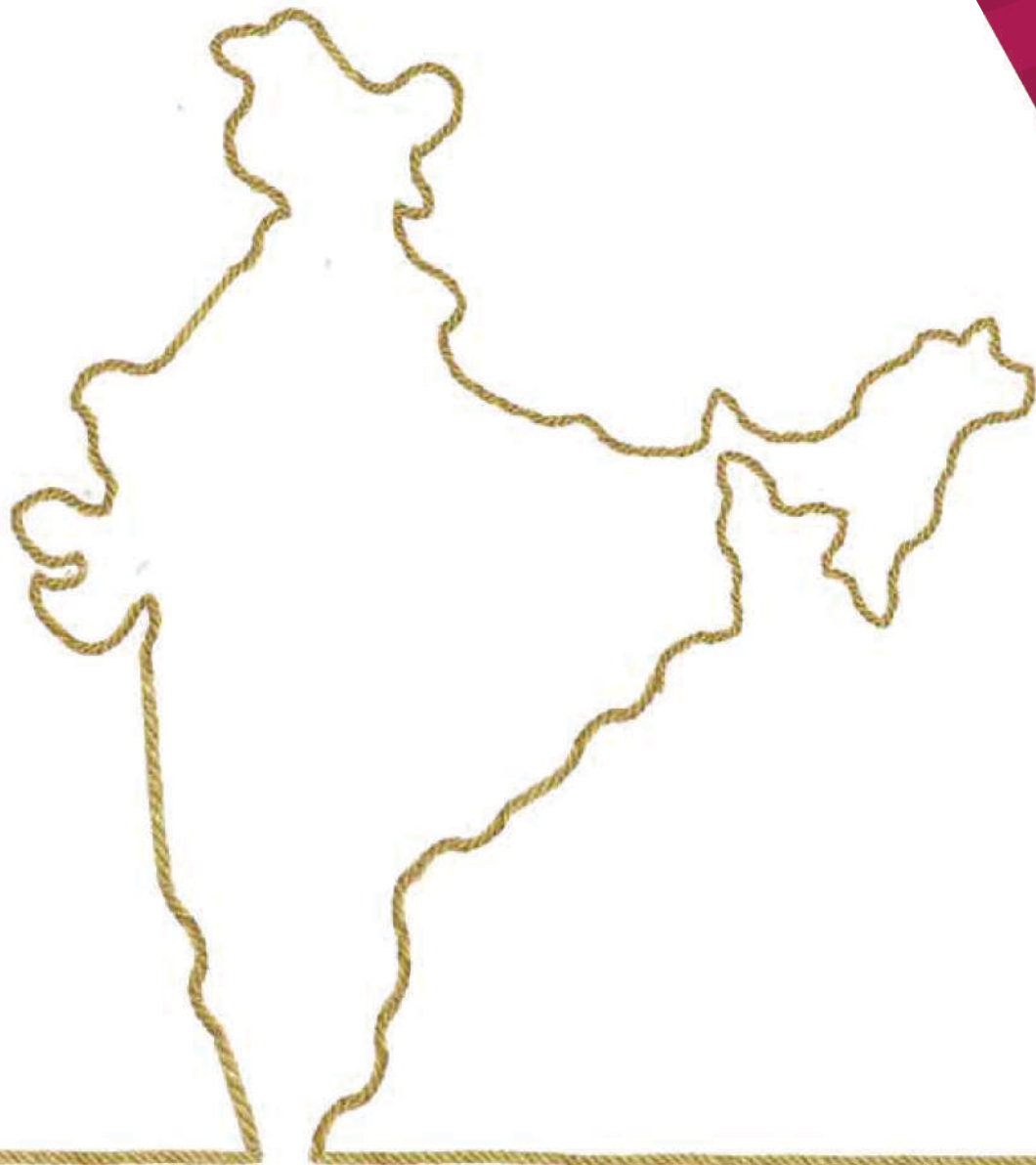
- Self Resources
- Omni-presence
- Assurance Loyalty
- Vehicle Resource
- Incentivize and Develop our Business

Reaching from all over the nation we speed up your assurance, loyalty, and trustworthiness as ever as you willing enchant your services with us.

With almost a century vehicle resource we aim to incentivize and develop our business in broader domain.



With more than twice the quartiles we have our self resources throughout the nation. Therefore, name the state or remotest village and we will be omni-present for you even there.

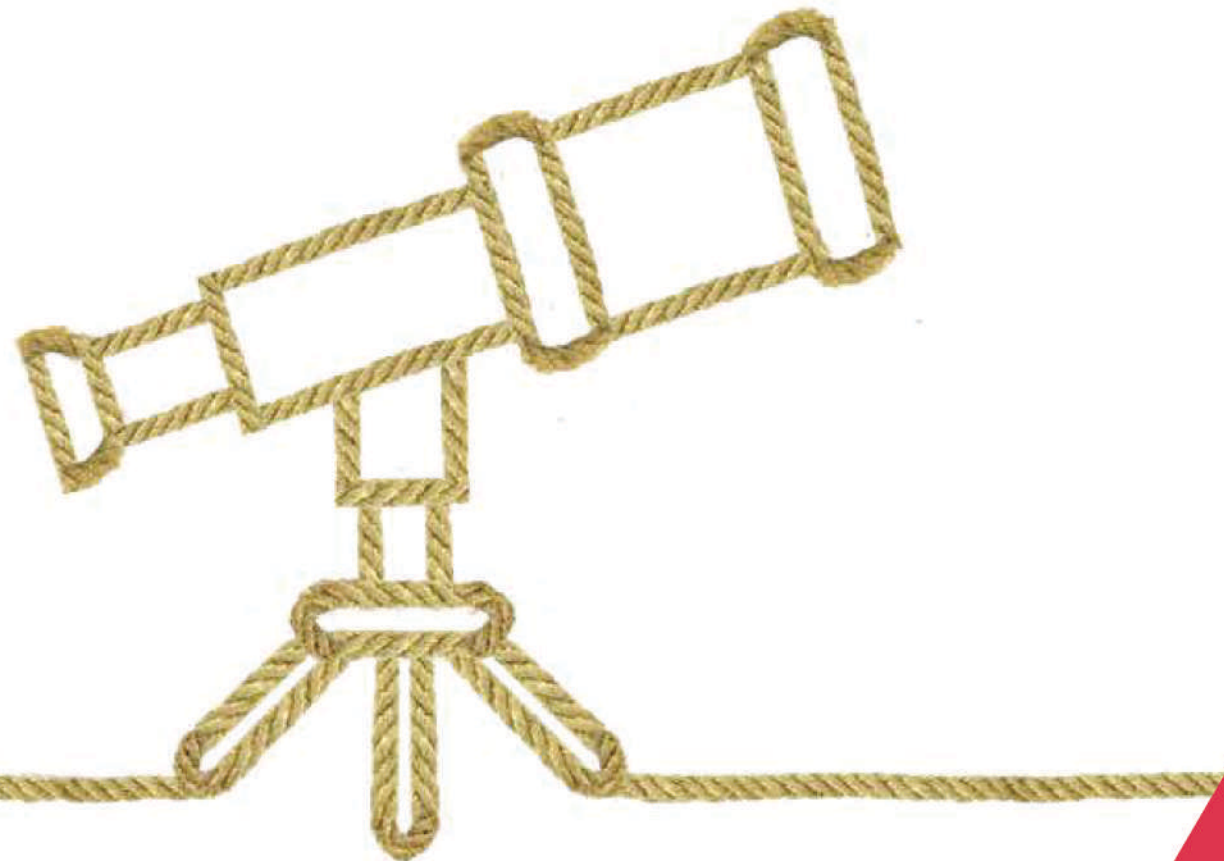








## Coiling the Near-Future Plans



Being one of the few is easily achievable and you must have heard loads of the name in these few. But, being the Ace and being known for Hands-on servicing is what we dwell in the thought. With view to this, we constantly strive for enhancing our existent services in full-proof way. And the near plans that we are implementing is tracing your orders.

- Being the Ace
- Hands-on Servicing
- Existent Services
- Implementing Tracing Orders
- Stay Connected
- Maintaining High rise Tracking



### E-Tracking

Similar to the small courier companies service, maintaining high rise tracking concept. Stay connected and informed of your order all through the channel.





Our  
Valuable Clients



- Manitowoc Pvt. Ltd.
- ENZENE Biosciences Ltd.
- Kohinoor Tishu Pvt. Ltd.
- Faurecia Pvt. Ltd.
- Shilpa Machinery Pvt. Ltd.
- Rosler Pvt. Ltd.
- L & L Products Pvt. Ltd.
- VI-SON Wires & Cables Pvt. Ltd.
- VALVEWORKS Pvt. Ltd.
- Greaves Cotton Pvt. Ltd.
- Kohinoor Tishu Pvt. Ltd.
- Kimberly-Clark Pvt. Ltd.
- PITTI LAMINATIO Pvt. Ltd.
- Ailtech naturalmente Pvt. Ltd.
- TVS Logistics Pvt. Ltd.

